



LMP 307

Stainless Steel Probe

Stainless Steel Sensor

accuracy according to IEC 60770:
standard: 0.35 % FSO
option: 0.25 % / 0.1 % FSO

Nominal pressure

from 0 ... 1 mH₂O up to 0 ... 250 mH₂O

Output signals

2-wire: 4 ... 20 mA
3-wire: 0 ... 20 mA / 0 ... 10 V
others on request

Special characteristics

- ▶ diameter 27 mm
- ▶ small thermal effect
- ▶ excellent accuracy
- ▶ excellent long term stability

Optional versions

- ▶ IS-protection zone 0
- ▶ SIL 2 (Safety Integrity Level)
- ▶ cable protection via corrugated pipe
- ▶ different kinds of cables
- ▶ different kinds of seal materials

The stainless steel probe LMP 307 is designed for continuous level measurement in water and clean or waste fluids.

Basic element is a high quality stainless steel sensor with high requirements for exact measurement with excellent long term stability.

Preferred areas of use are

Water / filtrated sewage



drinking water system
ground water level measurement
rain spillway basin
pump and booster stations
level measurement in container
water treatment plants
water recycling



Fuel / Oil
fuel storage
tank farm



LMP 307

Stainless Steel Probe

Technical Data

Input pressure range														
Nominal pressure gauge	[bar]	0.1	0.16	0.25	0.4	0.6	1	1.6	2.5	4	6	10	16	25
Level	[mH ₂ O]	1	1.6	2.5	4	6	10	16	25	40	60	100	160	250
Overpressure	[bar]	0.5	1	1	2	5	5	10	10	20	40	40	80	80
Burst pressure \geq	[bar]	1.5	1.5	1.5	3	7.5	7.5	15	15	25	50	50	120	120

Output signal / Supply	
Standard	2-wire: 4 ... 20 mA / $V_S = 8 \dots 32 V_{DC}$
Option Ex-protection	2-wire: 4 ... 20 mA / $V_S = 10 \dots 28 V_{DC}$
Options 3-wire	3-wire: 0 ... 20 mA / $V_S = 14 \dots 30 V_{DC}$ 0 ... 10 V / $V_S = 14 \dots 30 V_{DC}$

Performance	
Accuracy	standard: nominal pressure < 0.4 bar: $\leq \pm 0.5\%$ FSO nominal pressure ≥ 0.4 bar: $\leq \pm 0.35\%$ FSO option 1: nominal pressure ≥ 0.4 bar: $\leq \pm 0.25\%$ FSO option 2: for all nominal pressures: $\leq \pm 0.1\%$ FSO
Permissible load	current 2-wire: $R_{max} = [(V_S - V_S \text{ min}) / 0.02 \text{ A}] \Omega$ current 3-wire: $R_{max} = 500 \Omega$ voltage 3-wire: $R_{min} = 10 \text{ k}\Omega$
Influence effects	supply: 0.05 % FSO / 10 V load: 0.05 % FSO / k Ω
Long term stability	$\leq \pm 0.1\%$ FSO / year at reference conditions
Response time	2-wire: ≤ 10 msec; 3-wire: ≤ 3 msec

¹ accuracy according to IEC 60770 – limit point adjustment (non-linearity, hysteresis, repeatability)

Thermal effects (Offset and Span)	
Nominal pressure P_N	[bar] < 0.40 ≥ 0.40
Tolerance band	[% FSO] $\leq \pm 1$ $\leq \pm 0.75$
in compensated range	[°C] 0 ... 70

Permissible temperatures	
Permissible temperatures	medium: -10 ... 70 °C storage: -25 ... 70 °C

Electrical protection ²	
Short-circuit protection	permanent
Reverse polarity protection	no damage, but also no function
Electromagnetic compatibility	emission and immunity according to EN 61326

² additional external overvoltage protection unit in terminal box KL 1 or KL 2 with atmospheric pressure reference available on request

Electrical connection	
Cable with sheath material ³	PVC (-5 ... 70 °C) grey PUR (-10 ... 70 °C) black FEP (-10 ... 70 °C) black

³ cable with integrated air tube for atmospheric pressure reference

Materials (media wetted)	
Housing	stainless steel 1.4404 (316L)
Seals	FKM others on request
Diaphragm	stainless steel 1.4435 (316L)
Protection cap	POM

Explosion protection (only for 4 ... 20 mA / 2-wire)	
Approvals DX19-LMP 307	IBExU 10 ATEX 1068 X / IECEx IBE 12.0027X zone 0: II 1G Ex ia IIC T4 Ga zone 20: II 1D Ex ia IIIC T 85°C Da
Safety technical maximum values	$U_i = 28 \text{ V}$, $I_i = 93 \text{ mA}$, $P_i = 660 \text{ mW}$, $C_i \approx 0 \text{ nF}$, $L_i \approx 0 \text{ }\mu\text{H}$, the supply connections have an inner capacity of max. 27 nF to the housing
Ambient temperature range	in zone 0: -20 ... 60 °C with p_{atm} 0.8 bar up to 1.1 bar in zone 1 or higher: -20 ... 70 °C
Connecting cables (by factory)	cable capacitance: signal line/shield also signal line/signal line: 160 pF/m cable inductance: signal line/shield also signal line/signal line: 1 $\mu\text{H}/\text{m}$

Miscellaneous	
Option SIL ⁴ 2 application	according to IEC 61508 / IEC 61511
Current consumption	signal output current: max. 25 mA / signal output voltage: max. 7 mA
Weight	approx. 200 g (without cable)
Ingress protection	IP 68
CE-conformity	EMC Directive: 2004/108/EC
ATEX Directive	94/4/EG

⁴ not in combination with the accuracy 0.1%, only for 4...20mA / 2-wire

LMP 307

Stainless Steel Probe

Technical Data

Wiring diagrams

2-wire-system (current)

3-wire-system (current / voltage)

Pin configuration

Electrical connection	cable colours (DIN 47100)
Supply +	wh (white)
Supply -	bn (brown)
Signal + (only 3-wire)	gn (green)
Shield	ye/gn (yellow / green)

Dimensions (in mm)

standard

option

⇒ Total length of devices with accuracy 0.1 % FSO IEC 60770 increases by 35 mm!

LMP 307

Stainless Steel Probe

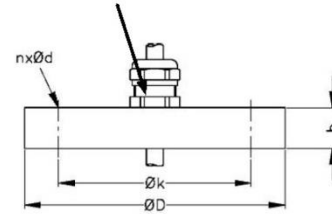
Accessories

Mounting flange with cable gland

Technical data

Suitable for	all probes	
Flange material	stainless steel 1.4404 (316L)	
Material of cable gland	standard: brass, nickel plated on request: stainless steel 1.4305 (303); plastic	
Seal insert	material: TPE (ingress protection IP 68)	
Hole pattern	according to DIN 2507	
Version	Size (in mm)	Weight
DN25 / PN40	D = 115, k = 85, b = 18, n = 4, d = 14	1.4 kg
DN50 / PN40	D = 165, k = 125, b = 20, n = 4, d = 18	3.2 kg
DN80 / PN16	D = 200, k = 160, b = 20, n = 8, d = 18	4.8 kg

cable gland M16x1.5 with seal insert (for cable- \varnothing 4 ... 11 mm)



Ordering type

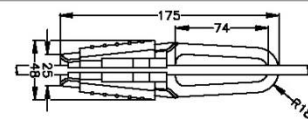
DN25 / PN40 with cable gland brass, nickel plated	ZMF2540
DN50 / PN40 with cable gland brass, nickel plated	ZMF5040
DN80 / PN16 with cable gland brass, nickel plated	ZMF8016

Ordering code

Terminal clamp

Technical data

Suitable for	all probes with cable \varnothing 5.5 ... 10.5 mm
Material	standard: steel, zinc plated optionally: stainless steel 1.4301 (304)
Weight	approx. 160 g



Ordering type

Terminal clamp, steel, zinc plated	Z100528
Terminal clamp, stainless steel 1.4301 (304)	Z100527

Ordering code

Display program

CIT 200

Process display with LED display

CIT 250

Process display with LED display and contacts

CIT 300

Process display with LED display, contacts and analogue output

CIT 350

Process display with LED display, bargraph, contacts and analogue output

CIT 400

Process display with LED display, contacts, analogue output and Ex-approval

CIT 600

Multichannel process display with graphics-capable LC display

CIT 650

Multichannel process display with graphics-capable LC display and datalogger

CIT 700

Multichannel process display with graphics-capable TFT monitor, touchscreen and contacts

PA 440

Field display with 4-digit LC display

For further information please contact our sales department or visit our homepage: <http://www.bdsensors.com>



